

CHEC GOLD



香港 煌鑫
CHEC GOLD
HONG KONG

建設我的家園
To Serve My Motherland



CHEC GOLD ENGINEERING CO., LIMITED
煌鑫工程有限公司

OUR COMPANY

Over the years, CHEC GOLD has been based in Hong Kong with high-quality project experience.

We have a modern production base, forward-looking production technology, and excellent engineering and construction talents.

We have provided high level design and construction solutions to many clients.



Professional Services

專業服務

- ▶ To provide reliable and quality service to our customers in an efficient and cost effective manner.

以高效和經濟的方式為我們的客戶提供可靠和優質的服務。



Technology Drive

科技驅動

- ▶ Use advanced tools for building information simulation and 3D linear calculation to assist in engineering design optimization.

使用先進工具進行建築信息模擬和三維線性計算，輔助工程設計優化。

DARE TO INNOVATE

敢於創新



Sincere Cooperation

精誠合作

- ▶ With rich experience and resources, we provide innovative and sustainable engineering technical support and after-sales services.

憑藉豐富的經驗及資源，提供創新、可持續發展的工程技術支援及售後服務。

多年來
煌鑫以優質的
項目經驗立足香港

我們擁有
現代化生產基地
前瞻的生產技術
優秀的工程和建造人才

為眾多客戶提供
高水平的設計和施工方案



OUR BUSINESS

CHEC GOLD Engineering can provide excellent project management services, including drawing, design, engineering and consulting services to public and private developers, contractors and private clients, undertaking various project engineering such as residential, commercial office buildings, factory buildings, airports, railways, ports, education facilities, and infrastructure facilities.

煌鑫工程能夠提供卓越的項目管理服務，包括制圖、設計、工程及諮詢服務予公營及私營發展商、承建商及私人客戶，承接不同項目工程如住宅、商業辦公大廈、工廠大廈、機場，鐵路，碼頭，教育設施及基礎設施等。

Steel Structure Works

鋼結構工程

- ▶ Refabricated steel construction / combination building / steel metal works
預製組建建築鋼鐵工程, 組合建築鐵器工程
- ▶ Steel engineering with complex structures / spiral staircase / curved surface structure
複雜結構的鋼鐵工程, 旋轉樓梯及雙曲面結構
- ▶ Main body of pedestrian overpass and elevator frame: stainless steel / glass / aluminum plate
行人天橋及電梯框架的主體: 不銹鋼/玻璃/鋁板
- ▶ Platform and machine installation services for mechanical equipment / large steel hangers
機械設備的平台及機器安裝服務, 大型鋼鐵吊架
- ▶ Temporary: steel works / steel platforms / steel molds / site perimeter / steel bridge
臨時鋼鐵工程及鋼台及鋼模, 地盤臨時圍街, 臨時鋼橋
- ▶ Metal roofing systems and wall systems / skylights / gutter drainage / fall protection, Etc.
金屬屋面系統及牆面系統, 天窗, 天溝排水, 防墜落等

Stainless Steel Works

不銹鋼工程

- ▶ Curtain wall stainless steel structural/ glass balustrades / stainless steel claddings
建築的幕牆不銹鋼件及天幕, 玻璃攔河, 外牆裝飾板
- ▶ Water tanks for environmental equipment / machine equipment platforms / pipelines / stainless steel supports
環保設備的水缸及機器設備平台及管線和不銹鋼支架
- ▶ For CLP and WSD: stainless steel cat ladders / platforms / manhole covers / stainless steel doors and louvres
中電及水務的不銹鋼貓梯, 平台, 沙井蓋, 不銹鋼門及百葉
- ▶ Manhole covers / stairs / canopies / fireproof doors / railing and handrails
沙井蓋, 樓梯, 雨棚, 防火門, 欄杆攔河扶手
- ▶ Louvre / cat ladder / climbing ladder / watering pillar / marble door / grating / water tank cover / folding door
百葉, 貓梯, 爬梯, 淋花柱, 雲石門, 格柵板, 水缸蓋, 趟折門
- ▶ Solar bracket / stainless steel support / support for energy equipment
太陽能支架, 不銹鋼支架, 能源設備不銹鋼架



Mechanical Works

機械工程

- ▶ Industrial cranes / bridge crane engineering / slag buckets
工業起重機及橋式起重機工程, 渣斗
- ▶ Water gate and engineering / opening and closing machine / dam gate machine / pollution barriers / grab-type sewage / cleaning machines
水閘及防水閘工程, 啟閉機, 壩頂門機, 攔污柵, 抓斗式清污機
- ▶ Installation of storage and pressure vessels (gas cylinders and oil cylinders)
儲藏及壓力容器安裝 (氣缸及油缸)
- ▶ Facilities For Floating Docks And Yacht Docks
浮動碼頭及遊艇碼頭設施
- ▶ Installation and commissioning services for large machinery
大型機械安裝, 調試服務
- ▶ 30 meters high pole lamp post, communication tower, intelligent lamp post, CCTV lamp post
30米高桿燈柱, 通信管塔, 智慧燈柱, CCTV燈柱

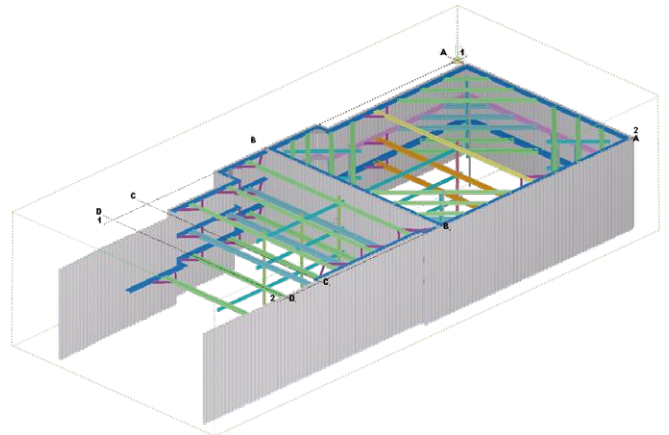
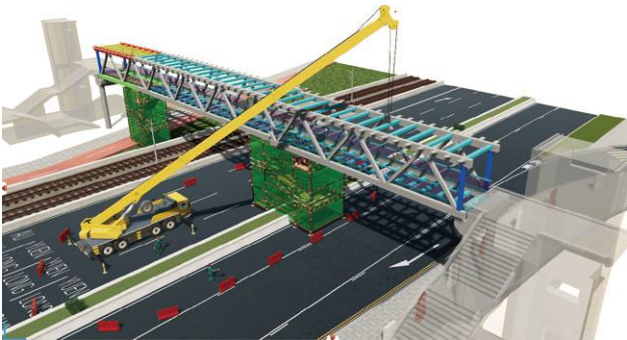
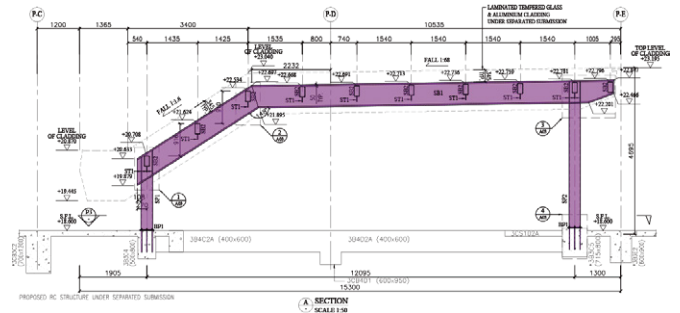
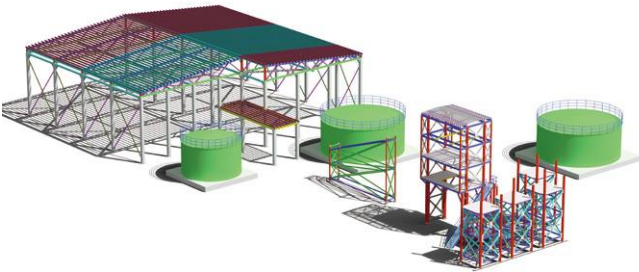
ELS-Works

基礎設施工程

- ▶ Excavation and installation of steel support systems, design and assembly
挖掘及安裝鋼支撐系統, 設計及組裝
- ▶ Reclamation cofferdam design / material procurement, production and supply
填海圍堰設計, 物料採購, 製作及供應
- ▶ Supply of steel drilling pipes and pile pipes / supply of S690 profiles
鑽探鋼管及打樁鋼管的物料供應, S690型材的供應



我們提供工程設計服務，結構設計，入則BD圖紙，施工圖紙，製造圖紙，安裝圖及竣工圖，建築工程計算，註冊工程師簽署，結構工程諮詢服務。



- 1 Steel structure design & 3d modeling — temporary & permanent steel structure design
鋼結構工程設計及3D模型——臨時鋼結構和永久結構工程設計及計算
- 2 Building structure design, details, BD drawings
建築結構設計，細節，入則BD圖紙
- 3 Building information modeling, or BIM for short
建築信息模擬（BIM）
- 4 ELS works design & services — foundation support system & land reclamation design
基礎設施工程設計及服務——地基支撐系統及填海圍堰設計

Innovative Technology Design

創新科技設計

Building Information Modeling (BIM)

建築信息模擬 (BIM)

CHEC GOLD Engineering adopts Building Information Modeling (BIM) technology to design and model, simulate and demonstrate the entire construction process, and assist the engineering team in making accurate judgments through digital technology.

Building Information Modeling combines various drawings and information to display the components used in building construction in the real world. It provides relevant information to the engineering team during construction, making the construction process more precise and providing low-risk design, reducing waste to a minimum, and facilitating communication among the engineering team.

By applying Building Information Modeling, the engineering team conducts a comprehensive analysis of the entire construction process, thereby optimizing planning, design, and coordination to improve the quality of construction.

煌鑫工程採用建築資訊模擬，透過數碼科技以設計建模，模擬運作及展示整個施工程序，協助工程團隊作出準確判斷。

建築信息模擬能結合眾多圖則及資訊，展示現實世界中用以建造建築物的構件，為工程團隊提供施工期間的相關資訊，使工程項目的施工過程更為精確，提供低風險設計，將浪費減至最低，並有助工程團隊間的溝通。

工程團隊透過應用建築資訊模擬，為整個施工程序作出全面分析，從而優化規劃、設計和協調，提升工程施工質量。

We are proficient in

我們精于

Use 4D construction methods to simulate actual construction conditions and safety measures.

以4D建造方法模擬實際施工狀況及安全措施等。

Scrutinize construction feasibility, reduce ineffective work and potential risks.

審視施工可行性，減少無效工程及潛在風險。

Combined with different construction statement and advantages, the processes are completed in the factory as much as possible to reduce the workload of the site.

結合不同的建造方案和優點，能在工廠完成的工序在工廠完成，減少地盤工作量。

Improve: safety, efficiency, quality performance.

提升安全、效率及質素表現

Provide assembly building synthesis plans.

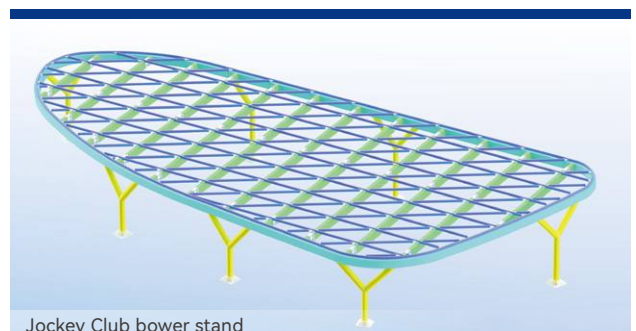
提供組裝建築合成方案

Optimization of engineering design is GHEC GOLD's expertise. We collaborate with Nida to use 3D linear calculations to analyze steel structures, which can reduce steel usage by approximately 15%. We consider construction plans, equipment, material selection and other factors in engineering design to explore multiple perspectives and possibilities for the project. This allows us to meet the needs of customers, while reducing construction costs and enhancing social benefits.

工程設計優化是煌鑫擅長的，我們和Nida合作，運用三維線性計算，對鋼結構進行分析，有利於降低用鋼量約15%。我們在工程進行設計、考慮施工方案、設備和材料選擇等，為項目帶來多角度考慮可能性方案。在滿足客戶的需求同時，降低建築成本，提升社會效益。



Steel sheet piles for foundation pit



Jockey Club bower stand

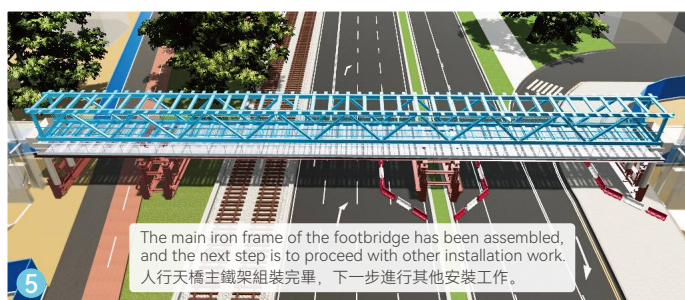
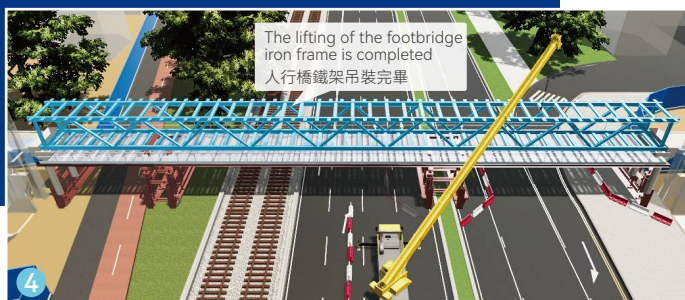
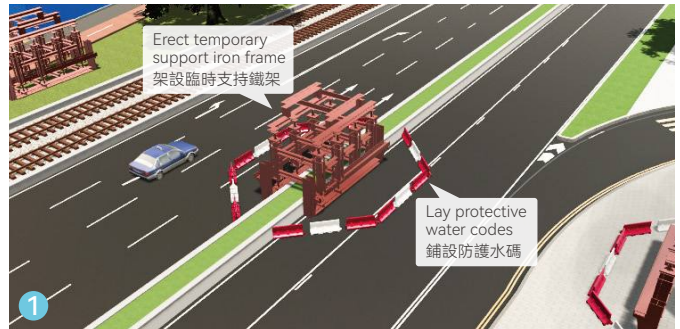
Comprehensive Method Statement

周全施工方案

CHEC GOLD's professional abilities are recognized in the construction industry. We have always adhered to the commitment of safety, punctuality, and controlling construction cost budgets to deliver different types of engineering projects.

The project quickly starts from transforming the conceptual design of the engineering project to the design statement, and the entire project management and construction period. Our services include engineering design and solution consulting, material procurement, processing, site management, on-site construction, etc; at the same time, strictly follow the ISO9001 quality assurance process for on-site installation and factory manufacturing.

CHEC GOLD's core project management team employs qualified welders and skilled on-site installation personnel, enabling us to improve project progress while maintaining safety. With our rich experience and resources, we provide customers with innovative and sustainable building solutions.



METHOD STATEMENT

煌鑫的專業能力在建築行業內認可。我們一直堅持以安全、準時及控制施工成本預算為承諾，交付不同類型的工程項目。

工程快速起貨於工程項目的概念設計轉化為設計方案，整個工程項目管理及施工週期。我們的服務包括工程設計及方案諮詢、物料採購、加工、地盤管理、現場施工等；並為現場安裝及廠房製造進行嚴格的ISO9001質量保證流程。

煌鑫的核心項目管理團隊，受聘合資格的焊工和熟練的現場安裝人員，我們能夠在保持安全的前提下，提升工程進度。憑藉豐富的經驗及資源，我們為客戶提供創新、可持續發展的建築方案。

FABRICATION CAPABILITIES

CHEC GOLD constantly invests in talents, plant production facilities and on-site construction equipment, with automated production procedures and automated steel processing technology facilities. We are striving to meet diversified engineering design needs and lead the industry development.

煌鑫不斷投資於人才、廠房生產設施及現場施工設備，具備自動化生產程序和自動化鋼材加工技術設施，力求滿足多元化的工程設計需求，引領行業發展。



30000 m²

Production Workshop
生產車間



15000 m²

Open Space for the Storage
開放式存放區域



60 +

Design Drafters and Installers
設計繪圖及安裝人員



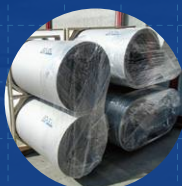
Certification

- ISO 9001:2015
- ISO 14001:2015
- ISO 45001:2018

Products 產品



Large diameter
flange pipe
大口徑法蘭管



Large conveying pipe
大型輸送管道



Embedded parts
預埋件



Curtain wall works
幕牆件



Laser fused
stainless steel profiles
不銹鋼激光焊接型材



Roof steel truss
fabrication
天面工字鋼桁架

PROJECT HIGHLIGHTS



Alteration and Addition Works

at Shatin Racecourse for the Hong Kong Jockey Club

香港賽馬會沙田馬場改建及加建工程

The Hong Kong Jockey Club elliptical inclined MME Canopy is an irregular elliptical inclined steel structure with an east-west span of 54m and a north-south span of 21m. Using advanced software and precision equipment, the professional construction team of CHEC GOLD has successfully achieved the goals of high safety, high quality, high efficiency, and timely completion.

香港賽馬會橢圓傾斜MME Canopy，其形狀為不規則橢圓傾斜鋼結構，東西跨距54m，南北跨距21m。煌鑫專業施工團隊利用先進的軟件和精密設備，成功達到了高安全，高質量，高效益及準時完工的目標。

Proposed A&A Works at Roof Floor

for Quarry Bay School, ON 6 Hau Yuen Path, Braemar Hill, Quarry Bay, Hong Kong

香港北角寶馬山校園徑六號
英基鯽魚涌小學天台的擬議A&A工程

CHEC GOLD's professional team successfully completed a case of using stainless steel profiles to build a pedestrian canopy. The profiles used in this project are all formed by laser welding of stainless steel profiles, which successfully verified the practicality of laser welding of stainless steel profiles independently developed by CHEC GOLD.

煌鑫專業團隊成功完成了一項全部使用不銹鋼型材搭建行人雨棚的案例。此專案所用型材，全部由不銹鋼板材激光焊接成型。成功驗證了由煌鑫自主研發的激光焊接不銹鋼型材的實用性。

W079A - TRAFFIC DECK ACROSS WWT

HKIA 3303 - Third Runway and Associated Works

HKIA 3303-W079合約 - 交通橋項目

The HKIA 3303 bridge at Hong Kong Airport can accommodate 47T of firefighting vehicles. Due to the overall diamond shape of the bridge deck, with a diagonal span of 45m and numerous bolted connections between the bridge deck beams and columns, our professional construction team utilizes advanced software and precision positioning systems to perfectly connect the wall beams and columns.

香港機場HKIA 3303行車橋，可通行約47T左右的消防車輛。由於橋面整體呈菱形，對角跨度達45m，同時橋面梁和橋柱之間存在大量螺栓連接，我司專業施工團隊利用先進的軟件和精密定位系統將牆體樑柱完美銜接。



香港 煌鑫
CHEC GOLD
HONG KONG

寫字樓/Office: 香港九龍大角咀通州街123號國貿中心9樓B室
Unit B, 9/F, Worldwide Centre, 123 Tung Chau Street,
Tai Kok Tsui, Kowloon, Hong Kong

Phone: +852-92999655 +852-90991019

Tel: +852-29811161

WhatsApp/WeChat: 92999655

E-mail: contact@checgold.com

Web: www.checgold.com

CHEC GOLD ENGINEERING CO., LIMITED

煌鑫工程有限公司

